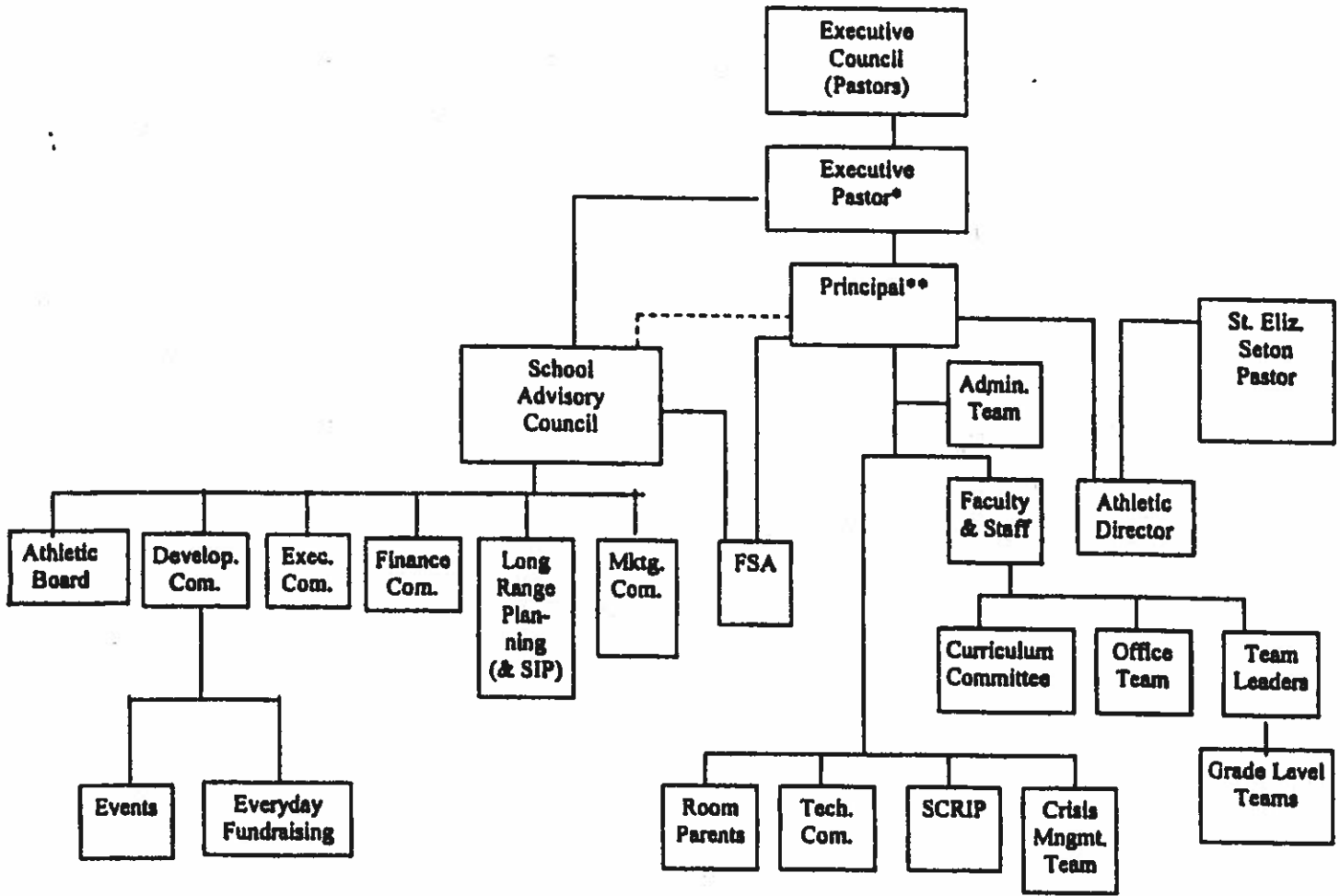


Cardinal Joseph Bernardin Catholic School
Organizational Chart
 (Operating according to the policies established by the Archdiocese of Chicago Office of Catholic Schools)



* The Executive Pastor and Principal also coordinate with the SES/CJB Building Use Committee with respect to the school's lease and use of the building, which is owned by St. Elizabeth Seton Parish.

** The Principal is also a member of, and directly coordinates with, various committees and teams, including the Finance, Development, Executive (SAC), and Technology committees, and the Administrative and Crisis Management teams. Committee work is subject to Principal and Executive Pastor approval.